



BLACKROOM GALLERY

Neil Williams
Quarantine
19 - 31 December 2021

Quarantine

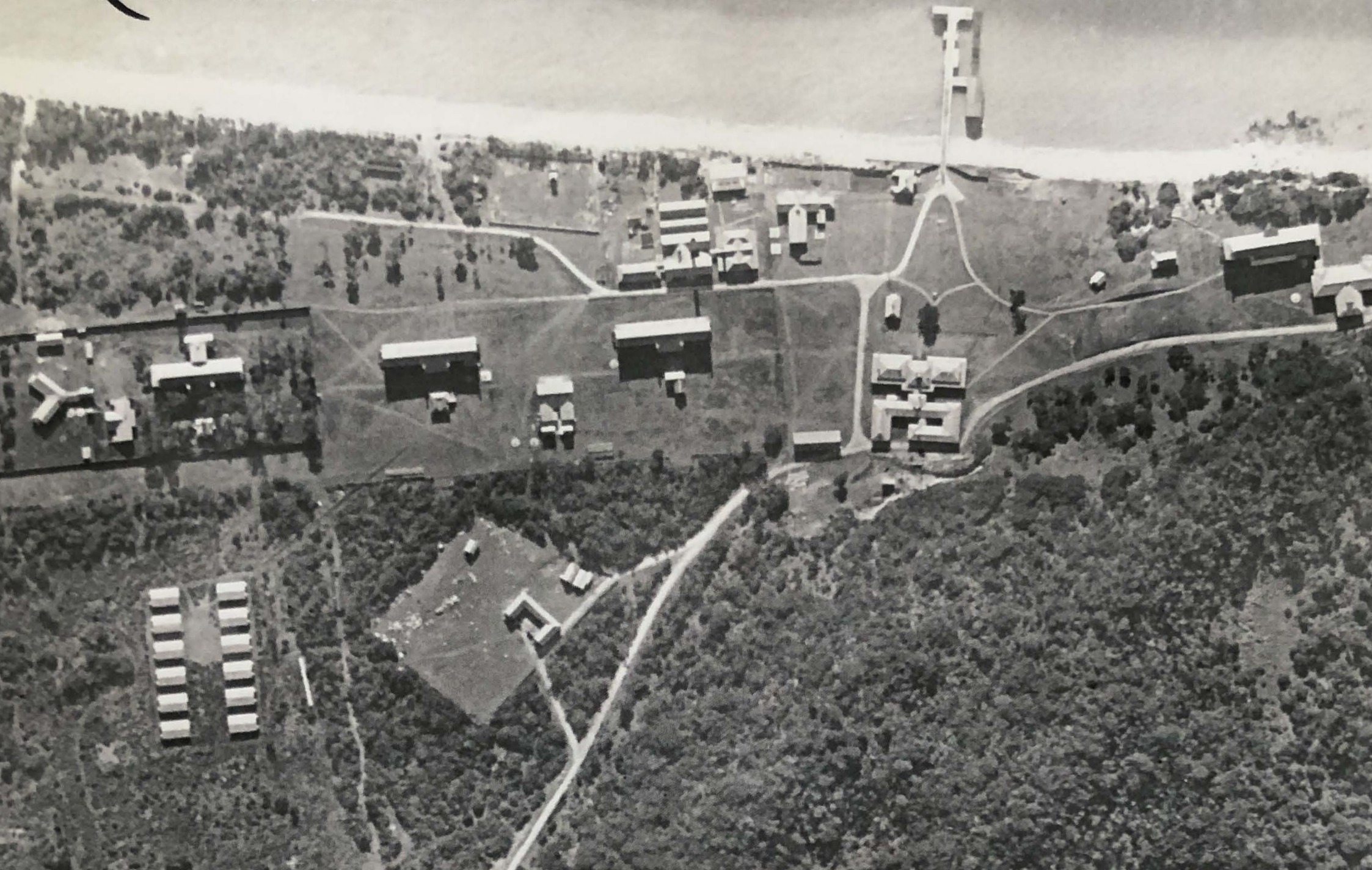
Neil Williams' exhibition 'Quarantine' is the body of work created through his artist's residency at Point Nepean on the tip of the Mornington Peninsula in May 2021 (ironically cut short due to a pandemic lockdown). Neil has researched and explored the quarantine station and its history in great detail. In his distinct style he has rebuilt images of this historically significant area, recreating the station's buildings in the landscape as they would have appeared when established.

"Over the past few years I have been fascinated by the old buildings, both those dotted around us and those long gone. There is a magic that these buildings can have over us. As we pause and wonder, they somehow transport us back to the past, opening up our imagination, and connecting us to ancestors, a dialogue with the past, and a reminder that we are just part of something continuous.

The residency at Point Nepean allowed me to spend many hours amongst these buildings, often alone after the park had closed to other visitors. There is love in these structures, along with sadness, loneliness and heartache.. I imagined spending months at sea on the journey to a new life - living in dark, confined galleys on a ship amongst diseases like typhoid and dysentery. Losing loved ones along the way, to finally arrive and be detained in quarantine until the infection had passed. The setting of the quarantine station is very beautiful, but would have been terrifying at the same time.

From the studio at the Boatman's cottage I could see out to the heads of Port Phillip Bay as I painted, and I would imagine the next ship arriving at the quarantine station."

Quarantine





Sullivans

oil on canvas
85x90cm (88.5x93.5cm framed)
\$4200



Boatman's Cottage

oil on canvas
85x90cm (88.5x93.5cm framed)
\$4200



Jetty

oil on linen
45.5x30.5cm (48.5x33.5cm framed)
\$1300



Quarantine

oil on canvas
85x90cm (88.5x93.5cm framed)
\$4200



3 + 4

oil on canvas
85x90cm (88.5x93.5cm framed)
\$4200



Isolation

oil on canvas
85x90cm (88.5x93.5cm framed)
\$4200



The Kitchen

oil on canvas
85x90cm (88.5x93.5cm framed)
\$4200



Shepherds Hut

oil on canvas
85x90cm (88.5x93.5cm framed)
\$4200

1. **Sullivans** (c1890)
2. **Boatman's Cottage** (c1889)
3. **Jetty** (c1860)
4. **Quarantine** (c1910)
5. **3 + 4** (c1910)
6. **Isolation**(c1884)
7. **The Kitchen** (c1910)
8. **Shepherd's Hut** (c1854)





in the

BLACKROOM GALLERY


cookstreetcollective
artists & makers

2/41 Cook St, Flinders

03 5989 1022

info@cookstreetcollective.com.au

www.cookstreetcollective.com.au

 @csc_gallery



Enjoy now. Pay later.
10 payments. 10 months.
No interest.

BLACKROOM GALLERY